

# South Fraser Perimeter Road: Environmental Assessment Update

November 5, 2007

# Background

- South Fraser Perimeter Road (SFPR) is part of the Provincial Gateway Program
- Delta has had limited opportunity to dictate the form of the proposed highway
- Environmental Assessment Application made in October 2006 to the Environmental Assessment Office (EAO)

# Environment Canada

- Potential impact of SFPR on Burns Bog
- Hydrological and hydrochemical functions
- Alignment along western edge of Bog
- Impacts on Lagg zone
- Potential effects of particulates
- Wildlife crossing

# Gateway's Response

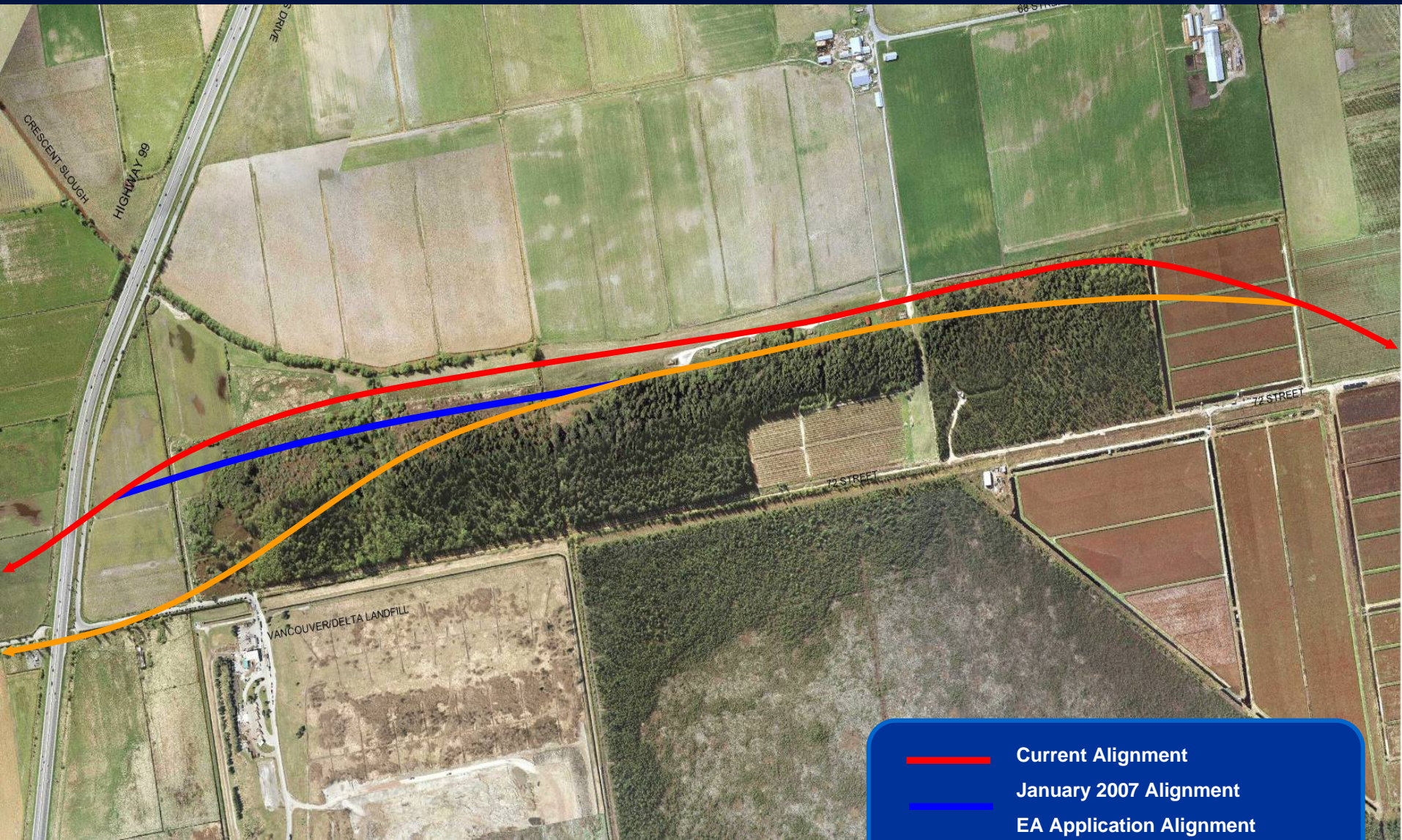
- Shifted alignment along western edge of Burns Bog to the west
- Lagg pond ecosystem complex – berm double-ditch system
- Reduced right of way footprint by 30%
- Added eight structures for wildlife passage
- Added additional small mammal crossings

# Gateway's Response

- Plant hedgerows adjacent to road alignment
- Drainage controls and stormwater management
- Multi-agency working group
- Financial and technical resources to support implementation of Burns Bog Management Plan

# Gateway's Response

- Relocation has cost impacts
- Require rehabilitation of Delta sewer
- Potential higher impacts to known archaeological site
- Increased impacts to actively farmed agricultural land



-  Current Alignment
-  January 2007 Alignment
-  EA Application Alignment

# Tree Canopy

- Council asked staff to report back relative to tree canopy loss and impact on carbon sink
- Previous Delta requests included:
  - Tree inventory be completed and replacement follow MoE criteria
  - Visual screen, mitigate pollution and greenhouse gas emissions
  - Ensure trees planted equal 40% canopy cover 20 yrs after project completion

# Tree Canopy

- Trees will be planted to mitigate visual, noise air quality and wildlife impacts.
- EA Application noted 5.67 ha of forest potentially impacted in North Delta
- Existing Tree Canopy coverage in North Delta is 41.4%
- Loss from SFPR would reduce to 41.1%

# Carbon Sink

- Important that trees be replaced to mitigate impact on carbon sink
- As trees grow, they actively sequester carbon
- Need further details of tree planting to provide a more detailed assessment

# Gunderson Slough

- Question raised regarding filling in of Gunderson Slough
- SFPR does not directly impact
- Gunderson Slough has significant fisheries, archaeological, and heritage values
- FRPA advised no formal plans
- CAO has written to FRPA

# Next Steps

- EAO will be providing an assessment report to the Minister of Environment and Minister of Community Services for their decision
- Draft report to be shared with EAO Working Group this week
- EAO plans to submit final late November
- Ministers have 45 days to make decision

# Next Steps

- Continue work with Gateway to address Delta's issues
  - Agricultural Enhancement
  - "Saving our Industrial Lands" initiative
  - River Way
  - Heritage
  - Sanitary Sewer
- Report back to Council

# Next Steps

- Environment Canada's comments and Gateway's response available on:

[www.eao.gov.bc.ca](http://www.eao.gov.bc.ca)

- Delta's submission to the EAO and previous reports to Council are available on Delta's website:

[www.corp.delta.bc.ca](http://www.corp.delta.bc.ca)

